



Project : Sai Dham Radhe Krishna  
Enclave

Builder : Sai Dham Appartments

Location : Lukarganj, Allahabad

## Overview



### **Sai Dham Radhe Krishna Enclave - Highlights:**

Radhe Krishna Enclave is one of the prestigious project of Sai Dham Apartments .It offers 2 and 3BHK Spacious Luxury High End Finished Semi Furnished smart apartments in Allahabad. FEATURES: Single Gated Entry along with security systems, close circuit cameras and access controls with EPABX Big Aluminium Windows up to Ceiling Height 24X7 Security Approvals: ADA (Allahabad Development Authority)

**Possession: December 2017**

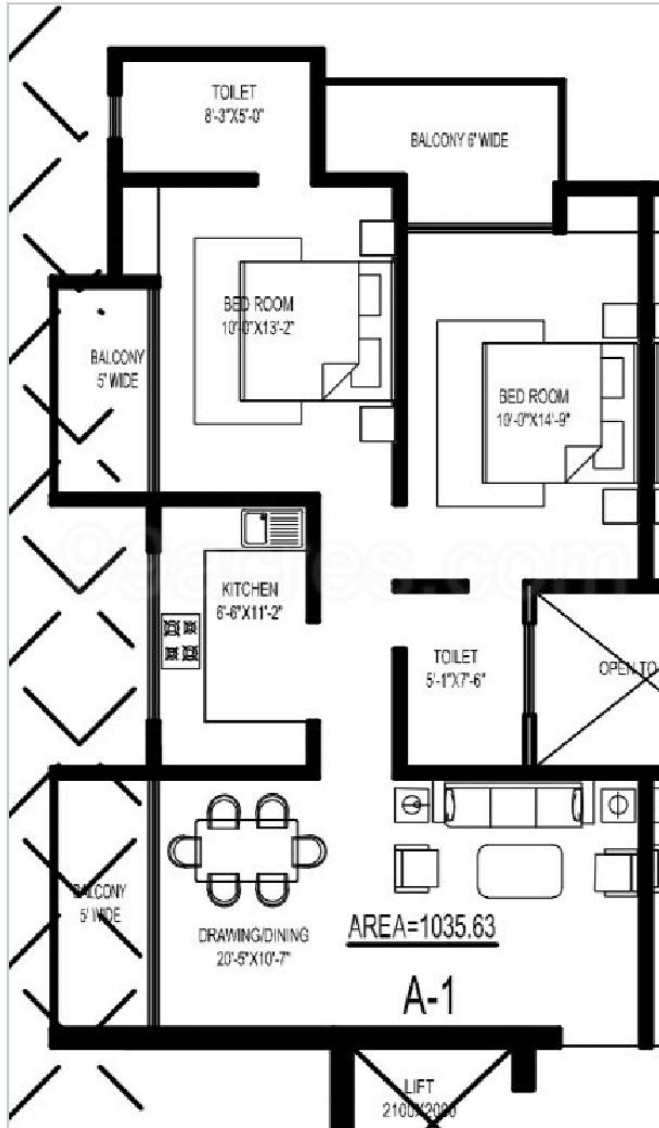


Project : Sai Dham Radhe Krishna Enclave

Builder : Sai Dham Appartments

Location : Lukarganj, Allahabad

### Floor Plan



2BHK+2T(1) Super Area: 1035 sq ft,  
Apartment (1)





Project : Sai Dham Radhe Krishna Enclave

Builder : Sai Dham Appartments

Location : Lukarganj, Allahabad



3BHK+2T(2) Super Area: 1377 sq ft,  
Apartment



Project : Sai Dham Radhe Krishna Enclave

Builder : Sai Dham Apartments

Location : Lukarganj, Allahabad



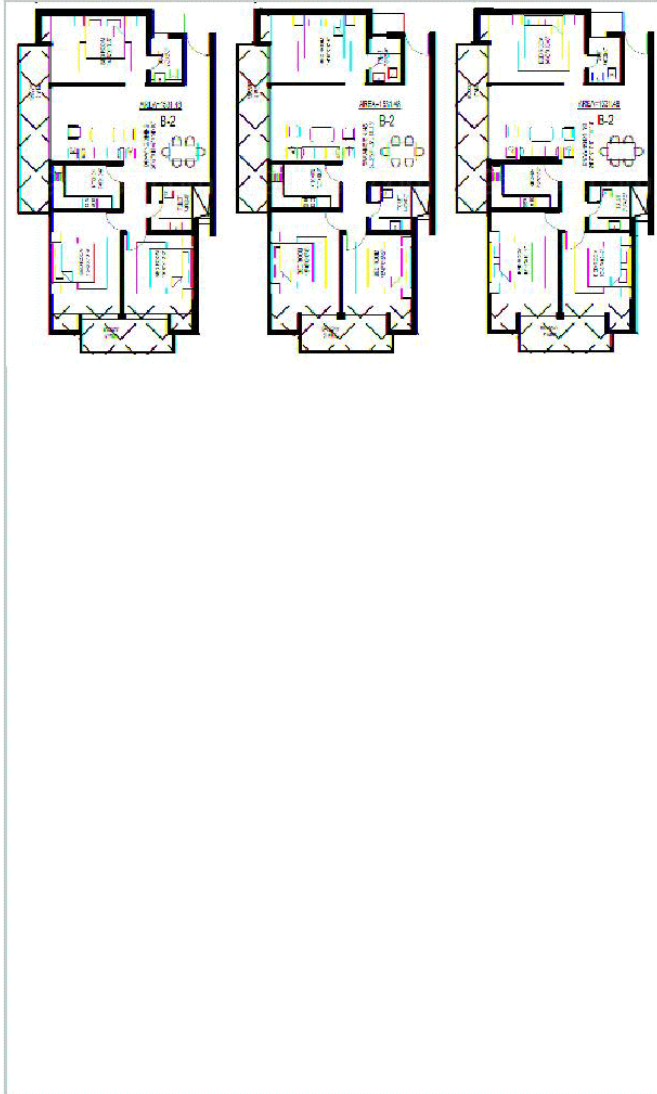
3BHK+2T(3) Super Area: 1415 sqft,  
Apartment



Project : Sai Dham Radhe Krishna Enclave

Builder : Sai Dham Apartments

Location : Lukarganj, Allahabad



3BHK+2T(4) Super Area: 1531 sqft,  
Apartment



Project : Sai Dham Radhe Krishna  
Enclave  
Builder : Sai Dham Appartments  
Location : Lukarganj, Allahabad

## Photos



## Amenities

CCTV Camera	Sports	Security	Water/Gas/Power	Others
Security	Children's Play	InterCom	24/7 Power	Lift(s)
Gated	Area	Fire Fighting	Backup	Car Parking
Community		Systems	Rain Water Harvesting	
			24/7 Water Supply	